

# Nevern Panel Discussion

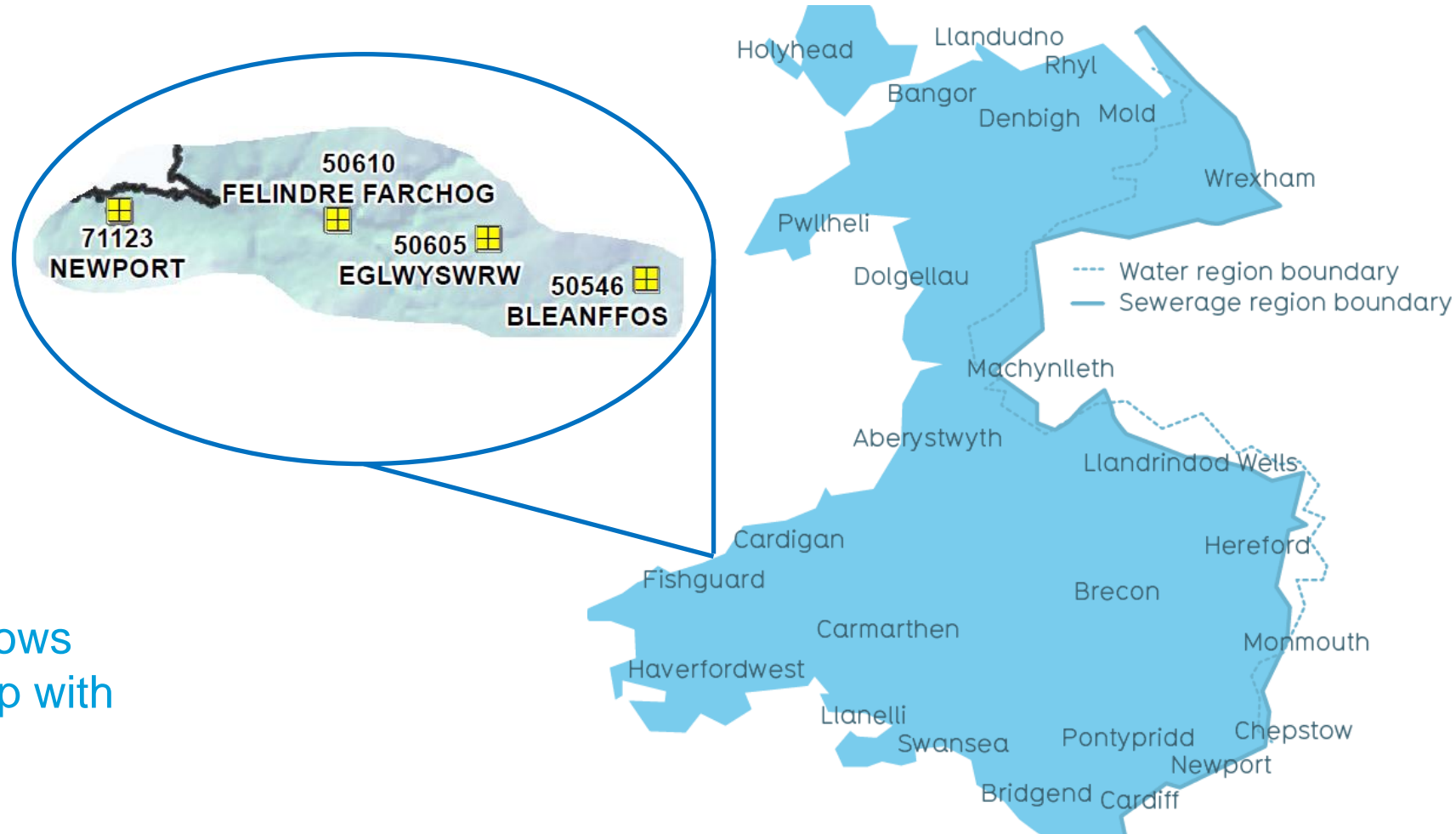
Gemma Williams – Ecology & Biodiversity Advisor  
Kelly Jordan – River Quality Liaison Manager

# Our Waste Operations in the Nevern Catchment

4 Wastewater Treatment Works (WwTW)  
Continuous flow of treated effluent from homes and business

- Crymych
- Blaenffos
- Felindre Farchog
- Eglwyswrw

And 4 WwTW storm overflows  
Intermittent flow – start/stop with heavy rainfall



Homes → Pipes → SPS → WwTW → Waterbody

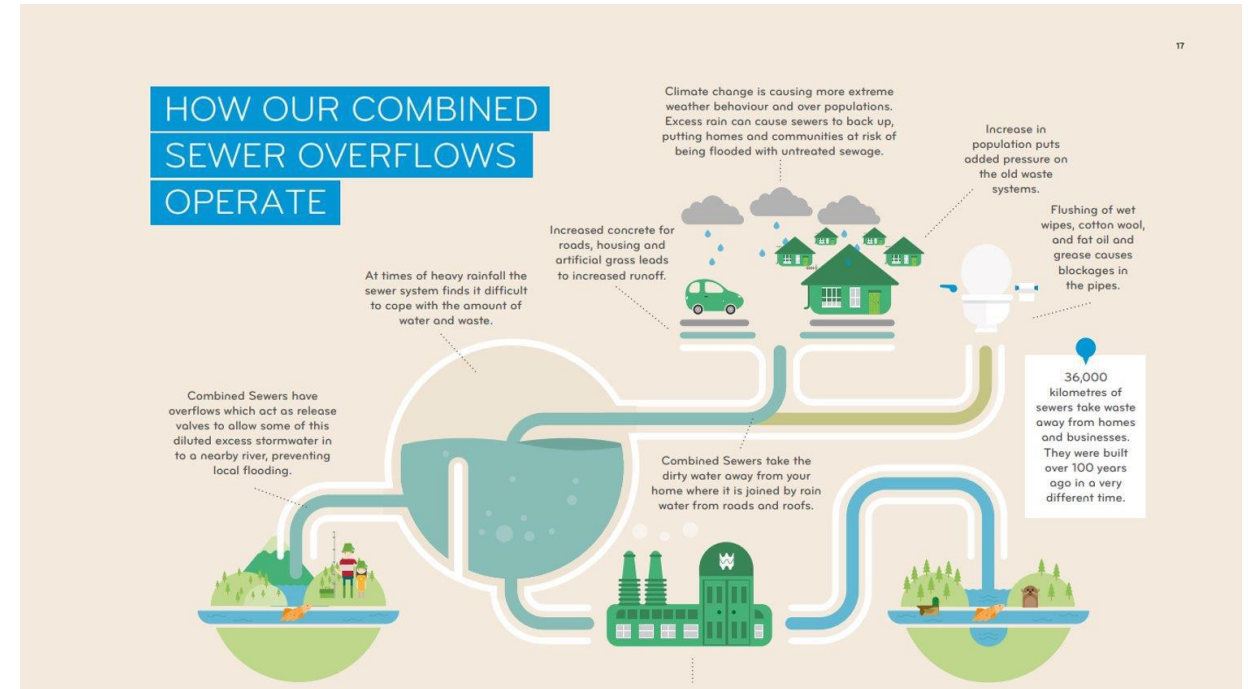
## Wastewater Treatment Works

Permits are issued to DCWW by NRW based on needs of the watercourse – Flow & Quality

4 x compliant WwTW

DCWW operations are one of multiple influences on rivers and waterbodies

[dwrcymru.com](http://dwrcymru.com)



## Storm Overflows (SOs)

Combined pipes = rain water & wastewater

SOs overflow into waterbodies when the network system is overwhelmed which protects homes from flooding

2 of these SOs are on our Storm Overflow Assessment Framework programme for investigation

# Working with Communities and Groups in Pembrokeshire

## Who?

- Pembrokeshire Beach Liaison Group
- Local swim groups
- Pembrokeshire County Council
- Local Town Councils
- Community Councils
- Natural Resources Wales
- MSs/MPs
- NMB+ for Cleddau/Teifi
- Pembrokeshire Coastal Forum

## What & How?

- Support Pembrokeshire Beach Liaison Group
- Attend meetings/share information to councils
- Host online sessions with swim groups
- Answer queries on our assets from MoP
- Share our programme and investment plans
- Launch 'Near Real Time Spill Map'/Host workshops
- Support phosphorus mitigation runways for LPAs
- Launch Citizen Science support fund
- Promote Community Fund
- Better River Quality Taskforce with WG, NRW



DOING THE  
RIGHT THING  
FOR NATURE

2022

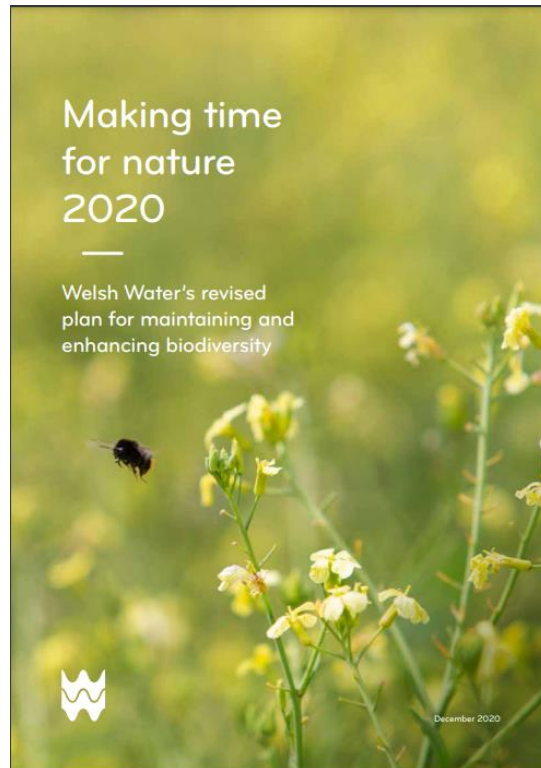
# Biodiversity update July 2023

To maintain and enhance biodiversity  
within the fulfilment of our functions  
for the wellbeing of current and  
future generations





# Key Welsh Water Biodiversity documents



# Opportunities going forward

- INNS management
- Biodiversity enhancement
- Funding

